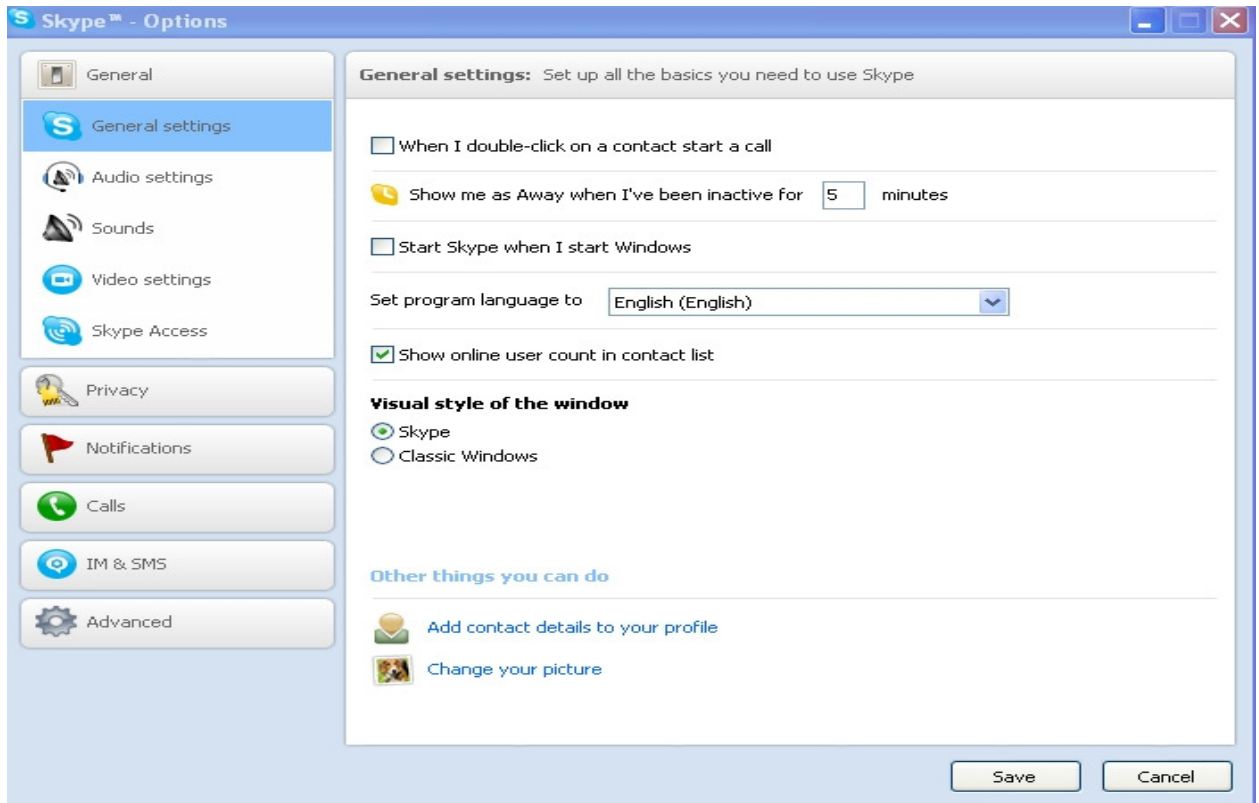
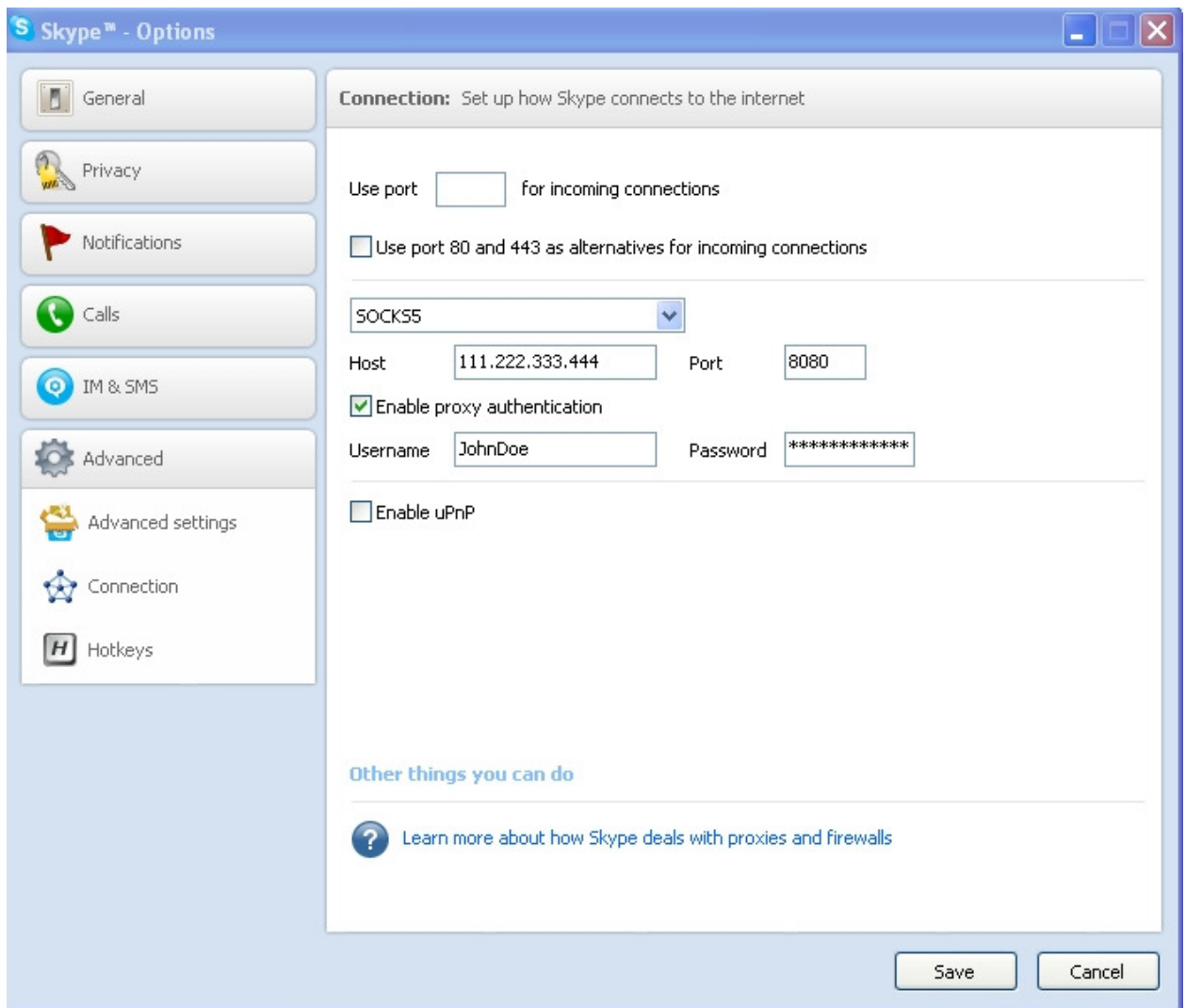


How to configure your Socks proxy for Skype

- a. Open Skype's main window. On the menu bar select Tools and click it. Scroll down to options and click it. The Skype Options window should open.



- b. In the Menu window on the left, scroll down to connection and click it. The Connection interface should appear. Use the pull down arrow to select the Socks 5 protocol . Then in the Host Field enter your Socks IP and in Port enter the port number you received when you signed up. These settings will take effect after you restart Skype.



- c. Click Save and then exit and restart Skype.
- d. Try signing in again, if you still aren't able to sign in, then please test the socks proxy using a free socks proxy checker which you can download at <http://www.bpsocks.com/socksproxychecker.exe>

Support: <http://www.bpsocks.com/supportsuite>